

# SPINNER WASH SYSTEM

## DRIVE THROUGH TOUCHLESS



# CENTRI<sup>®</sup> SPINNER

**T**HE KEY CLEANING ADVANTAGE | High-pressure water jets, essential for effectively cleaning vehicles with areas beyond the reach of brushes, remove mud, caked-on dirt, sand and other coarse particles.

InterClean's specialized Centri<sup>®</sup> Spinners are high-pressure nozzles mounted to heavy-duty spray arches constructed of galvanized steel.

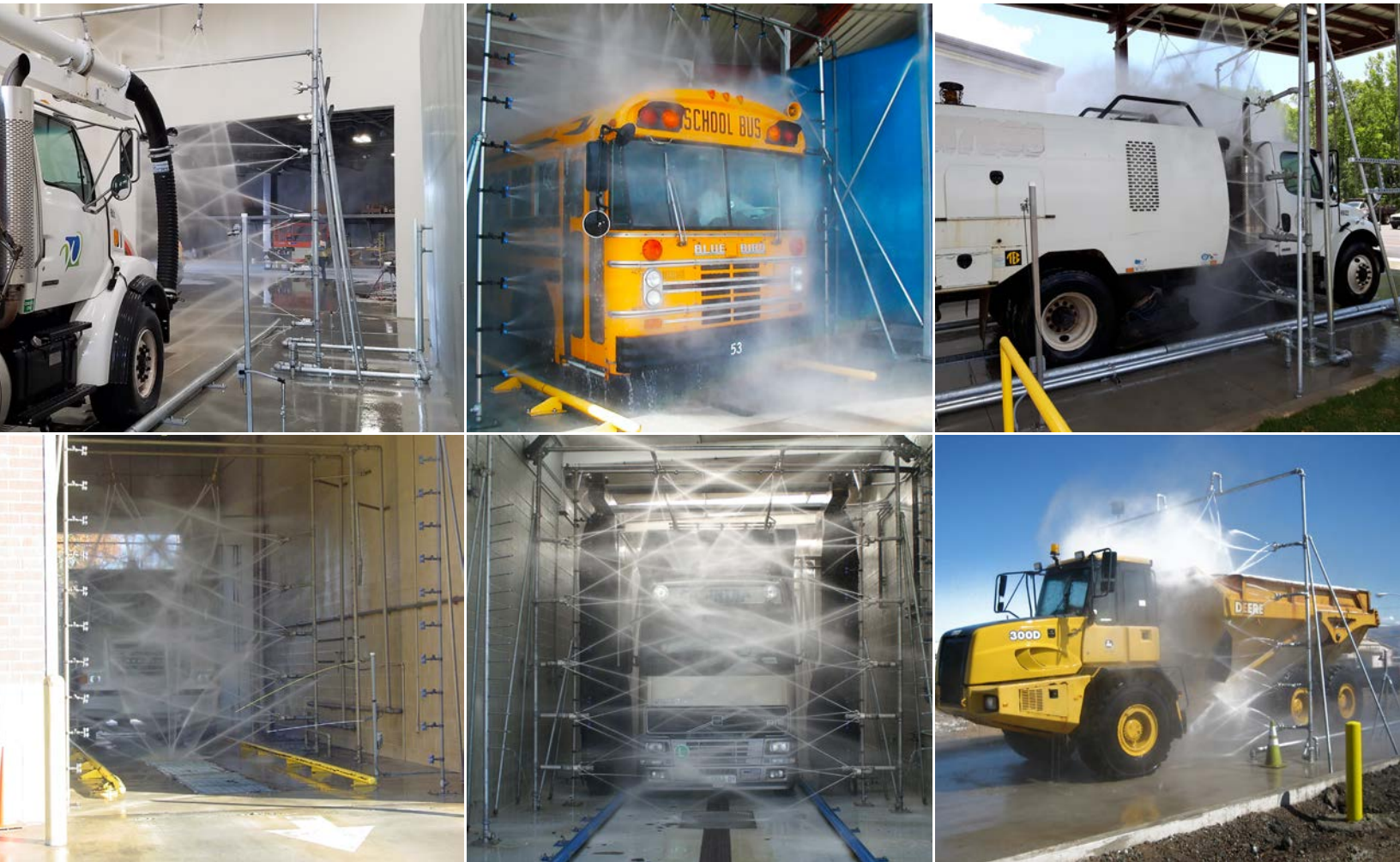


The heavy-duty cleaning power of Centri<sup>®</sup> Spinner nozzles are configured to maintain effectiveness at increased distances to power away dirt, grime, salt, and other corrosives quickly and efficiently – and completely touchless.

- » Dramatically reducing corrosion and life cycle cost, improved accessibility to the maintenance areas of the vehicle, and improved general appearance are all clear benefits of using a Centri<sup>®</sup> Spinner Wash System.
- » These touchless truck wash systems are ideal for large vehicles with irregular shapes.
- » Touchless wash eliminates physical damage and wearing on paint finishes.

# STANDARD SYSTEM MODULES

- » **Spinner Arch:** Touchless cleaning with zero-degree impact with rotation allows for maximum cleaning power and coverage with minimum water usage.
  - Fully adjustable (stainless steel) Spinner nozzles clean front and sides of vehicle.
  - Each Spinner delivers 15gpm of water @ 300 PSI.
  - Standard 3-year factory warranty for all new Spinners.
- » **1- or 2-Stage Detergent Arches** for high and/or low pH applications.
- » **Front or Rear Arch:** cleaning action specifically oriented for the front or rear of the vehicle using fresh or reclaimed water .
- » **High-pressure pumping modules** configured specifically to your vehicle wash needs.
- » **Tire Guides:** 4-inch diameter galvanized steel pipe headings, varies in length by application; single or double-height tire guides ranging from 4" - 12".
- » **Sensors that enable a completely automatic system** to most effectively utilize your water and detergent.



# TOUCHLESS SPINNER WASH APPLICATIONS



## TRUCK WASH

InterClean's advanced brushless wash systems provide the ultimate, scratch-free cleaning experience for all kinds of vehicles, especially those with hard-to-reach places.

InterClean's touchless system is an ideal solution for public works and private fleets of irregularly-shaped vehicles.

- » Garbage Trucks
- » Work Trucks
- » Dump Trucks
- » Military Vehicles
- » Tankers
- » Water Trucks
- » Fuel Trucks
- » Box Trucks

### WASH PROCESS:

- » **Detergent Arch:** A high pH (Alkaline) detergent is applied to the entire vehicle.
- » **Spinner Arch:** Provides cleaning action for the front and sides of the truck using fresh or reclaimed water.
- » **Rear Arch:** Provides cleaning action for the rear of the truck using fresh or reclaimed water.
- » **Final Rinse Arch:** Removes any residual dirt and/or chemicals.

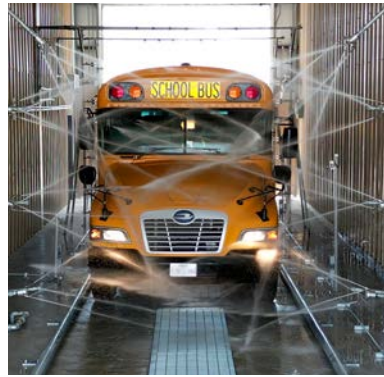


## BUS WASH

The growing number of installations in school and transit bus garages across the country are a testament to the value of InterClean's touchless wash units. InterClean's Centri® Spinner design delivers a highly effective and efficient wash without risking damage to mirrors, safety signs, bike racks, and light covers. The base configuration includes an Under Chassis Wash designed to help reduce corrosion and maintenance costs.

### WASH PROCESS:

- » **Detergent Arch:** A high pH (Alkaline) detergent is applied to the entire vehicle.
- » **Chassis Wash:** High-pressure two-spinner chassis wash removes road contaminants from the under side of the vehicle.
- » **Spinner Arch:** Provides cleaning action for the front and sides of the bus using fresh or reclaimed water.
- » **Rear Arch:** Provides cleaning to the rear of the bus using fresh or reclaimed water.
- » **Final Rinse Arch:** Removes residual recycled water when using a reclaimed system.



## SALT TRUCK WASH

Designed to address specific areas of salt trucks and equipment that require decontamination, this wash lengthens the life of the vehicle/salt truck. Various equipment options available based on site variables and budget.

### WASH PROCESS:

- » **2-Step Detergent Arch:** Low pH (acidic) and High pH (Alkaline) applicators.
- » **Chassis Wash:** Cleans away corrosive material and buildup from the underside of the vehicle.
- » **High Pressure Rear Cab and Front Bed** modules provide an effective clean cycling through 148 gal/min.
- » **Inside Bed Wash:** Floods the inside of bed to flush salt out (295 gal/min @ 300 PSI).
- » **Spinner Arch:** 150 gal/min covers all other areas on salt truck, and allows wash utilization for all other vehicles.
- » **Side Wash Manifolds:** (2 - 82 gal/min) Sprays are directed to clean salt spreader on rear of truck.
- » **Under Bed Arch:** 185 gal/min washing the underside of the raised bed on the vehicle.



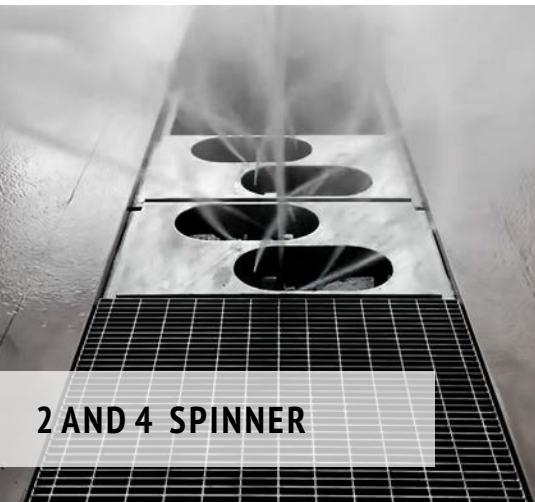
# CHASSIS WASH SYSTEMS

Vehicles and heavy-duty equipment that drive on rough or unfinished surfaces collect debris on the undercarriage causing corrosion on the chassis and mechanical components, leaving them at risk for rust and structural damage.

Regularly using an InterClean Chassis Wash system will help prevent this by cleaning away the corrosive material, road buildup, and other debris from the underside of the vehicle.

- » Balanced integration of intense cleaning power, reliable water recycling, and convenient, economical dirt removal.
- » Dramatically reduce time needed to prepare vehicles for maintenance and repair.
- » Multiple configurations available.
- » Suitable for in- or above- ground installation.

InterClean Chassis Wash System modules can be used as a stand-alone chassis wash system, combined with new InterClean wash system installations, or placed in an existing wash bay.



**2 AND 4 SPINNER**



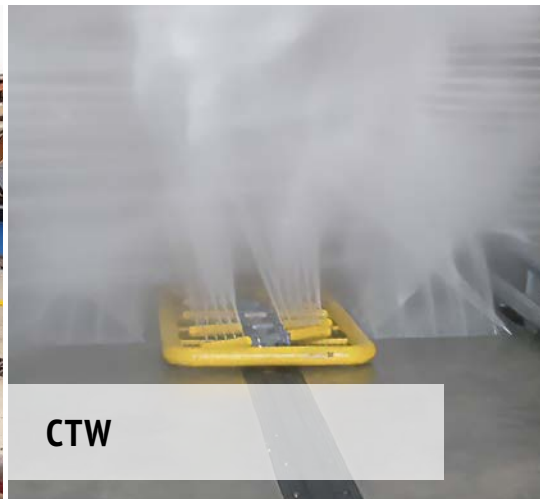
**HEAVY-DUTY SPINNER**



**OSCILLATING SPINNER SPRAY BAR**



**SPRAY BAR**



**CTW**



**FST**

# EQ 100 WATER RECLAIM SYSTEM

Recycling wash water greatly decreases the amount of fresh water needed, and disposed of by up to 90% each wash. Water reclamation saves money and enables facilities to operate efficiently in areas with high water and sewer costs, or areas that are highly regulated.

By using the efficient and cost-effective EQ 100 water recycling system, InterClean Equipment is able to employ the full force of huge volumes of pressurized wash water, which creates a cleaning impact that is simply not possible with other automatic vehicle washing systems.

The system is designed to recycle and aerate the wash water automatically, without requiring changing filters or manual supervision, and is capable of operating under the most demanding vehicle wash conditions such as recycling water used to wash garbage trucks.



The modular design requires only 25 ft<sup>2</sup> of space allowing for easy installation using a reclaim pit and almost any site configuration



## FEATURES

System Design	<ul style="list-style-type: none"> <li>The InterClean reclaim system is comprised of a Settling Pit, InterScreen® maintenance free filter, and the EQ Module.</li> <li>The modular footprint ensures that the equipment can be precisely configured at the factory to require a small footprint on-site.</li> <li>The module is pre-wired, pre-plumbed and mounted on a skid.</li> </ul>				
Settling Pit	<ul style="list-style-type: none"> <li>Designed to promote separation of solids from the water.</li> <li>Continuously aerated by the recirculation pump to prevent unwanted odors.</li> </ul>				
Filtration	<ul style="list-style-type: none"> <li>Maintenance free stainless steel InterScreen® filter is mounted in the settling pit supplying initial filtration.</li> <li>Cyclonic filtering mechanisms incorporated with module to further filter the water before delivering it to the high-pressure pump.</li> </ul>				
Treatment	<ul style="list-style-type: none"> <li>Module comes equipped with bioremediation system to allow for enhanced water treatment capability.</li> <li>The system uses no chemicals or additives and is environmentally sustainable.</li> </ul>				
Dimensions	<ul style="list-style-type: none"> <li>60" (150 cm) wide x 60" (150 cm) long x 102" (260 cm) tall per unit</li> </ul>				
<table border="1" style="width: 100%; border-collapse: collapse;"> <thead> <tr> <th style="width: 50%; text-align: center;">Recycling Capacity</th> <th style="width: 50%; text-align: center;">High-Pressure Capacity for Reclaimed Water</th> </tr> </thead> <tbody> <tr> <td style="text-align: center;">• 300 GPM (1250 l/m) continuously per unit</td> <td style="text-align: center;">• 50-300 GPM (200-1250 l/m) continuously per unit</td> </tr> </tbody> </table>		Recycling Capacity	High-Pressure Capacity for Reclaimed Water	• 300 GPM (1250 l/m) continuously per unit	• 50-300 GPM (200-1250 l/m) continuously per unit
Recycling Capacity	High-Pressure Capacity for Reclaimed Water				
• 300 GPM (1250 l/m) continuously per unit	• 50-300 GPM (200-1250 l/m) continuously per unit				

Established in 1984, InterClean Equipment is a leader in the design, build, and installation of automated heavy-duty vehicle wash equipment. We are an engineering, innovation, and technology pioneer that builds, installs, and services wash systems for vehicles ranging from standard buses and trucks, up to 440-ton mining haul trucks. We have the knowledge and experience to handle the toughest applications in the most demanding environments.



INTERCLEAN EQUIPMENT IS A WHOLLY OWNED  
SUBSIDIARY OF OAKLAND INDUSTRIES, INC.

INTERCLEAN EQUIPMENT, LLC  
709 JAMES L. HART PARKWAY  
YPSILANTI, MI 48197 USA

PHONE: +1 (734) 961 3300  
FAX: +1 (734) 961 0092  
U.S. AND CANADA:  
+1 (800) 468-3725

EMAIL: SALES@INTERCLEAN.COM  
TECHSUPP@INTERCLEAN.COM  
WEBSITE: INTERCLEAN.COM