

## ACCESSORI & OPZIONI ACCESSORIES & OPTIONS

Codice Part Nr.	DESCRIZIONE DESCRIPTION	P11 D	P11 WD	P25 WD	P25 WD 1300	P40 WDM	P58.3 WD	P58.3 WDM	P58.4 WDM	P58.3 WDB	P58.4 WDB	A11 D	A11 WD	A27 WD	A58 WDM	A58.3 WD	A58.4 WD	A58.3 WDM	A58.4 WDM	A58.3 WDB	A58.4 WDB	A58.4 WDM	A58.4.50 WDB
225437	Top Dry Ø 37	●										●											
225438	Top Wet Ø 37		●										●										
225439	Top Ø 40			●	●	●	●	●	●	●	●			●	●	●	●	●	●	●	●		
204637	Top Ø 50																					●	●
204652	Filtro stoffa Cloth filter	●	●	●	●	●	-	-	-	-	-	●	●	●	-	-	-	-	-	-	-	-	-
204577	Filtro stoffa Cloth filter	-	-	-	-	-	●	●	●	●	●	-	-	-	-	●	●	●	●	●	●	●	●
204578	Filtro stoffa Cloth filter	-	-	-	-	-	-	-	-	-	-	-	-	-	●	-	-	-	-	-	-	-	-
405436	Filtro cartuccia Cartridge filter	○	○	○	○	○	○	○	○	○	○	○	○	○	○	○	○	○	○	○	○	○	○
405433	Filtro cartuccia lavabile Washable cartridge filter	○	○	○	○	○	○	○	○	○	○	○	○	○	○	○	○	○	○	○	○	○	○
405434	Filtro cartuccia HEPA HEPA cartridge filter	○	○	○	○	○	○	○	○	○	○	○	○	○	○	○	○	○	○	○	○	○	○
443004	Sacco filt. Microfibr Microfiber filter bag	○	○	-	-	-	-	-	-	-	-	○	○	-	-	-	-	-	-	-	-	-	-
443005	Sacco filt. Microfibr Microfiber filter bag	-	-	○	○	○	-	-	-	-	-	-	○	-	-	-	-	-	-	-	-	-	-
443001	Sacco filt. Microfibr Microfiber filter bag	-	-	-	-	-	○	○	○	○	○	-	-	-	○	○	○	○	○	○	○	○	-
405429	Filtro spugna Sponge filter	-	●	●	●	●	○	○	○	○	○	-	●	●	○	○	○	○	○	○	○	○	○
405432	Filtro nylon Nylon filter	○	○	○	○	○	-	-	-	-	-	○	○	○	-	-	-	-	-	-	-	-	-
417432	Filtro nylon Nylon filter	-	-	-	-	-	○	○	○	○	○	-	-	-	○	○	○	○	○	○	○	○	○
204566	Accessorio fisso frontale Front mounted squeegee	-	-	-	-	-	○	○	○	○	○	-	-	-	-	-	-	-	-	○	○	-	-
221157	Kit scarico rapido(market) Hose drain kit (market)	-	-	-	-	-	-	-	-	○	○	-	-	-	-	-	-	-	-	-	○	○	-
204641	Kit scarico rapido(market) Hose drain kit (market)	-	-	-	-	-	○	○	-	-	-	-	-	-	○	-	-	○	○	-	-	○	-

● Di serie  
Standard

○ Opzione  
Optional

- Non disponibile  
Not available

\* Con riserva di modifica delle caratteristiche tecniche  
We reserve the right to make technical modifications



Timbro e firma del rivenditore  
Dealer's signature and stamp

**TMB srl**

Via Cà Nova Zampieri, 5  
37057 San Giovanni Lupatoto VR  
Italy  
www.tmbvacuum.com

# Top Line

## Aspiratori commerciali polvere e polvere/liquidi

## Commercial dry and wet/dry vacuum cleaners



Your Better Choice



# Top Line

## KIT ACCESSORI ACCESSORIES KIT



DATI TECNICI - TECHNICAL FEATURES	U.M. - M.U.	P11 D	P11 WD	P25 WD	P25 WD 1300	P40 WDM	P58.3 WD	P58.3 WDM	P58.4 WDM	P58.3 WDB	P58.4 WDB	A11 D	A11 WD	A27 WD	A58 WDM	A58.3 WD	A58.3 WDM	A58.3 WDB	A58.4 WDB	A58.4 WDM	A58.3 WDB	A58.4 WDB	A58.4.50 WDM	A58.4.50 WDB
Codice - Code	-	107591	107590	107592	107593	107594	107595	107596	107597	107598	107599	107601	107600	107602	107603	107605	107606	107607	107608	107609	107610	107611	107613	
Voltaggio; Frequenza - Voltage; Frequency	V ; Hz	230-240 ; 50/60	230-240 ; 50/60	230-240 ; 50/60	230-240 ; 50/60	230-240 ; 50/60	230-240 ; 50/60	230-240 ; 50/60	230-240 ; 50/60	230-240 ; 50/60	230-240 ; 50/60	230-240 ; 50/60	230-240 ; 50/60	230-240 ; 50/60	230-240 ; 50/60	230-240 ; 50/60	230-240 ; 50/60	230-240 ; 50/60	230-240 ; 50/60	230-240 ; 50/60	230-240 ; 50/60	230-240 ; 50/60	230-240 ; 50/60	
Motore - Motor	N.	1	1	1	1	1	2	2	2	2	2	1	1	1	1	2	2	2	2	2	2	2	2	
Tipo - Type	-	Polvere Dry	Polvere&Liquidi Wet&Dry	Polvere&Liquidi Wet&Dry	Polvere&Liquidi Wet&Dry	Polvere&Liquidi Wet&Dry	Polvere&Liquidi Wet&Dry	Polvere&Liquidi Wet&Dry	Polvere&Liquidi Wet&Dry	Polvere&Liquidi Wet&Dry	Polvere&Liquidi Wet&Dry	Polvere Dry	Polvere&Liquidi Wet&Dry	Polvere&Liquidi Wet&Dry	Polvere&Liquidi Wet&Dry	Polvere&Liquidi Wet&Dry	Polvere&Liquidi Wet&Dry	Polvere&Liquidi Wet&Dry	Polvere&Liquidi Wet&Dry	Polvere&Liquidi Wet&Dry	Polvere&Liquidi Wet&Dry	Polvere&Liquidi Wet&Dry	Polvere&Liquidi Wet&Dry	
Stadi - Stages	N.	Monostadio Single stage	Bistadio Double stage	Bistadio Double stage	Bistadio Double stage	Bistadio Double stage	Bistadio Double stage	Bistadio Double stage	Bistadio Double stage	Bistadio Double stage	Bistadio Double stage	Monostadio Single stage	Bistadio Double stage	Bistadio Double stage	Bistadio Double stage	Bistadio Double stage	Bistadio Double stage	Bistadio Double stage	Bistadio Double stage	Bistadio Double stage	Bistadio Double stage	Bistadio Double stage	Bistadio Double stage	
Pot. Nom/Max. - Nom. Power/ Max Power	W	1000/1200 Diretto - Direct	1100/1350 By-pass	1100/1350 By-pass	1350/1450 By-pass	1350/1450 By-pass	2200/2700 By-pass	2200/2700 By-pass	2700/3000 By-pass	2200/2700 By-pass	2700/3000 By-pass	1000/1200 Diretto - Direct	1100/1350 By-pass	1100/1350 By-pass	1350/1450 By-pass	2200/2700 By-pass	2700/3000 By-pass	2200/2700 By-pass	2700/3000 By-pass	2200/2700 By-pass	2700/3000 By-pass	2700/3000 By-pass	2700/3000 By-pass	
Portata d'aria - Air flow	l/s - m³/h	49 - 176	54 - 194	54 - 194	59 - 212	59 - 212	108 - 389	108 - 389	118 - 423	108 - 389	118 - 423	49 - 176	54 - 194	54 - 194	59 - 212	108 - 389	118 - 423	108 - 389	118 - 423	108 - 389	118 - 423	118 - 423	118 - 423	
Depressione - Water lift	mm H <sub>2</sub> O - kPa	220 - 21,5	2200 - 22	2200 - 22	2500 - 25	2500 - 25	2200 - 22	2200 - 22	2500 - 25	2200 - 22	2500 - 25	2200 - 21,5	2200 - 22	2200 - 22	2500 - 25	2200 - 22	2500 - 25	2200 - 22	2500 - 25	2200 - 22	2500 - 25	2500 - 25	2500 - 25	
Capacità totale fusto - Total capacity tank	l	25	25	35	35	60	77	77	77	77	77	25	22	35	77	77	77	77	77	77	77	77	77	
Capacità utile fusto - Effective capacity tank	l	11	11	25	25	40	58	58	58	58	58	11	11	27	58	58	58	58	58	58	58	58	58	
Materiale fusto - Material tank	-	Polipropilene Polypropylene	Polipropilene Polypropylene	Polipropilene Polypropylene	Polipropilene Polypropylene	Polipropilene Polypropylene	Polipropilene Polypropylene	Polipropilene Polypropylene	Polipropilene Polypropylene	Polipropilene Polypropylene	Polipropilene Polypropylene	Acciaio Inox Stainless steel	Acciaio Inox Stainless steel	Acciaio Inox Stainless steel	Acciaio Inox Stainless steel	Acciaio Inox Stainless steel	Acciaio Inox Stainless steel	Acciaio Inox Stainless steel	Acciaio Inox Stainless steel	Acciaio Inox Stainless steel	Acciaio Inox Stainless steel	Acciaio Inox Stainless steel	Acciaio Inox Stainless steel	
Lunghezza cavo - Cable length	m	10	7	7	7	7	7	7	7	7	7	10	7	7	7	7	7	7	7	7	7	7	7	
Peso - Weight	kg	6,5	6,5	8	8	14	18,5	18,5	18,5	18,5	18,5	7,5	7,5	9	16	20	20	20	20	20	20	20	20	
Dimensioni l x p x h - Sizes l x w x h	cm	36 x 36 x 57	36 x 36 x 57	40 x 40 x 65	40 x 40 x 65	51 x 60 x 89	51 x 65 x 92	51 x 60 x 95	51 x 60 x 95	51 x 60 x 95	51 x 60 x 95	36 x 36 x 57	36 x 36 x 57	36 x 36 x 76	51 x 60 x 92	51 x 60 x 95	51 x 60 x 95	51 x 60 x 95	51 x 60 x 95	51 x 60 x 95	51 x 60 x 95	51 x 60 x 95	51 x 60 x 95	
Kit accessori - Accessories kit	-	Top Dry Ø 37	Top Wet Ø 37	Top Ø 40	Top Ø 40	Top Ø 40	Top Ø 40	Top Ø 40	Top Ø 40	Top Ø 40	Top Ø 40	Top Dry Ø 37	Top Wet Ø 37	Top Ø 40	Top Ø 40	Top Ø 40	Top Ø 40	Top Ø 40	Top Ø 40	Top Ø 40	Top Ø 40	Top Ø 50	Top Ø 50	
Livello di rumore - Noise level	dB	70	70	70	70	70	72	72	72	72	72	70	70	70	70	72	72	72	72	72	72	72	72	

### FILTRI - FILTERS

#### LEGENDA - KEY WORDS

P: Fusto in polipropilene - Polypropylene tank  
A: Fusto in acciaio - Stainless steel tank  
W: Liquido - Wet  
D: Polvere - Dry  
M: Carrello fisso - Market trolley  
B: Carrello basculante - Tip & pour trolley



Filtro in stoffa permanente  
Permanent cloth filter



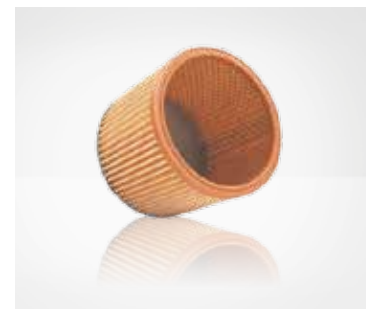
Filtro in spugna  
Sponge filter



Sacco filtro microfibra  
Microfiber filter bag



Filtro in nylon  
Nylon filter



Filtro cartuccia  
Cartridge filter



Filtro cartuccia lavabile  
Washable cartridge filter



Filtro cartuccia HEPA  
HEPA cartridge filter



Accessorio fisso frontale  
Front mounted squeegee



BASCULANTE - TIP & POUR

Il sistema di capovolgimento del fusto rende molto semplice lo svuotamento dello stesso  
Convenient "tip & pour" trolley system makes it easy and quick to empty the tank